

# PORTFOLIO

2018

2026

عبدالوهاب الجندى  
ABDULWAHAB AL JUNDI



# CONTENTS



**Landscape Design for a  
Campus Green Space**

PAGE 4



**Residential Landscape  
Design Project**

PAGE 11



**Al-Naseem Pavilion:  
Wind-Catcher in Hejazi Identity**

PAGE 15



## ABDULWAHAB AL JUNDI

a Landscape Architecture specialist driven by the intersection of Urban Humanization and sustainable planning. With a foundation built at King Abdulaziz University and six years of multidisciplinary design experience, I transform spatial challenges into livable, human-centric environments. My work is dedicated to enhancing urban livability, leveraging advanced 3D visualization and strategic design to align with the ambitious goals of Vision 2030.





PROJECT:

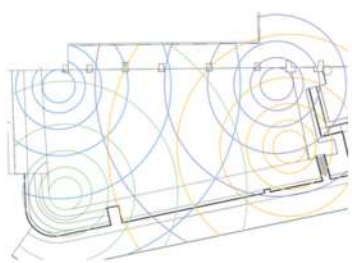
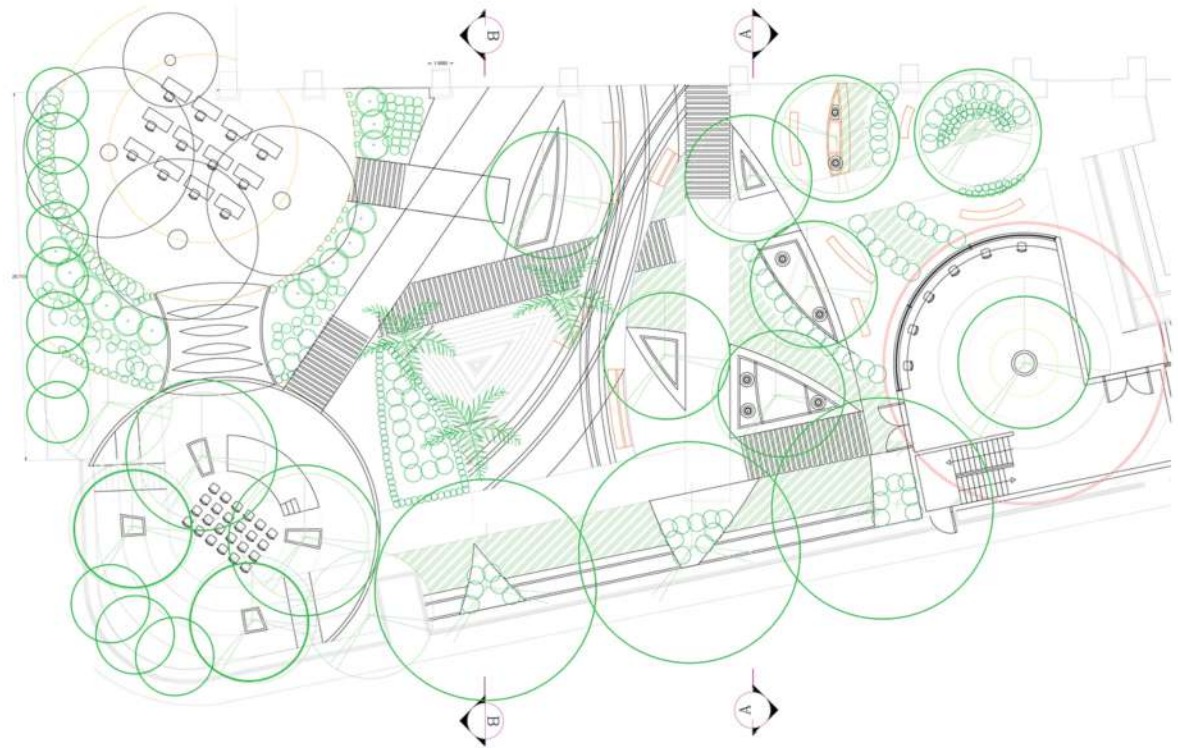
# Landscape Design for a **Campus Green Space**

**Project Goal** is To create a vibrant and sustainable academic green space that enhances learning and well-being while fostering social interaction and accommodating diverse recreational and social activities.

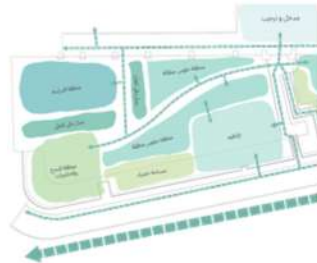
**Project Location :** The green spaces behind the Faculty of Architecture and Planning are the project location. The site has two green spaces separated by an access ramp and stairs. the design Focuses on the left large green space .



The design is inspired by the Golden Ratio. It began with a main circle in the lower-left corner, from which circles were scaled and duplicated using the Golden Ratio. This circular cluster was replicated in the site's four key corners, creating intersecting points that guided the placement of seating areas and functional elements throughout the space.



Grid System



Conceptual plan

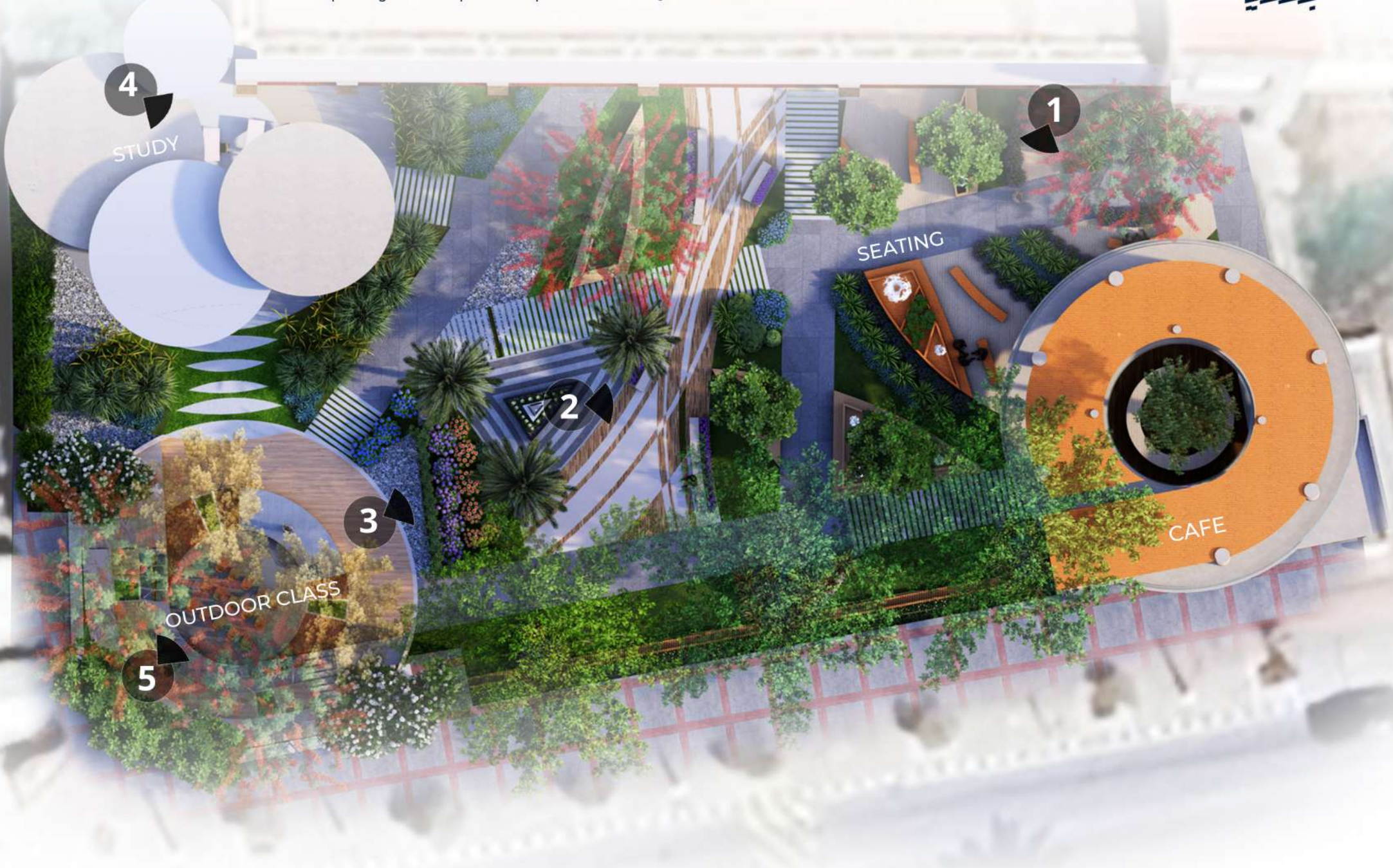
Site Design



Section A-A



Section B-B











PROJECT :

# Residential Landscape Design Project

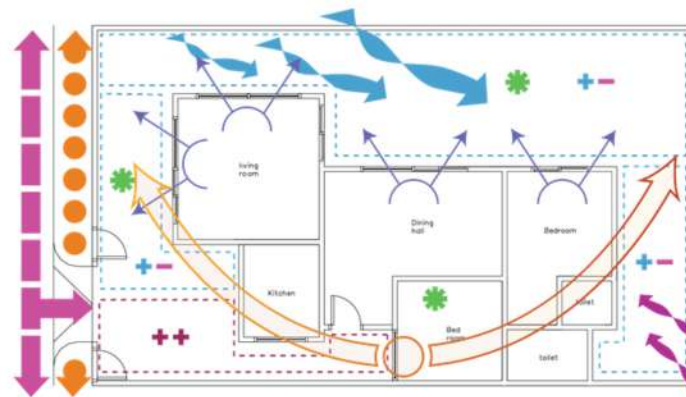
**Project Overview :** This project involves the design and development of a residential landscape for a private home located in Jeddah City. The site spans a total area of 375 m<sup>2</sup>, with a built floor plan covering 146 sqm. The client is the ALJUNDI family, a household consisting of two members.

**Objective :** To create a functional, visually appealing, and environmentally sustainable landscape design that improves the residents' quality of life. The design will be tailored to suit the specific site conditions and reflect the personal needs and lifestyle of the family.

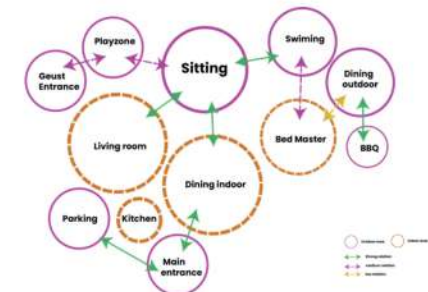
**Concept narrative :** The villa garden is designed to be elegant, comfortable, and modern—blending clean lines with natural beauty.



Mood Board

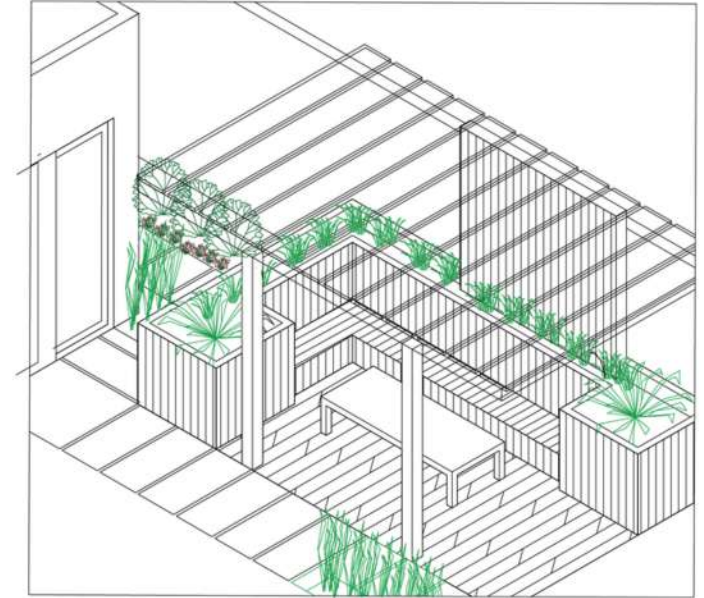


— Sun path  
— Car path  
— human path  
++ extra heat zone  
+ less heat zone  
● Focal point

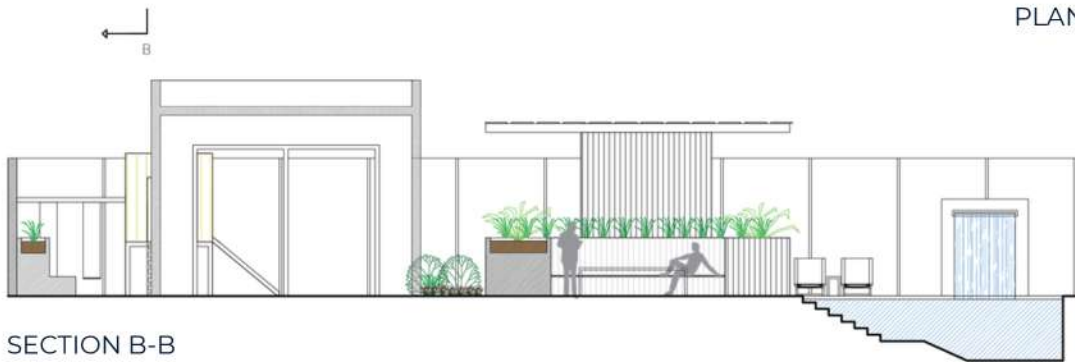




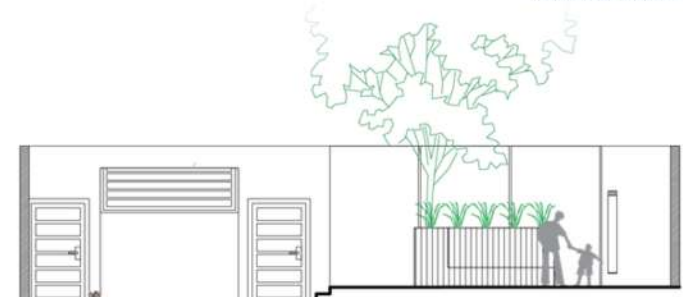
PLAN



ISOMETRIC



SECTION B-B



SECTION A-A



TOP VIEW PHOTOSHOP COLORED PLAN



ISOMETRIC AI 3D PRESPECTIVE



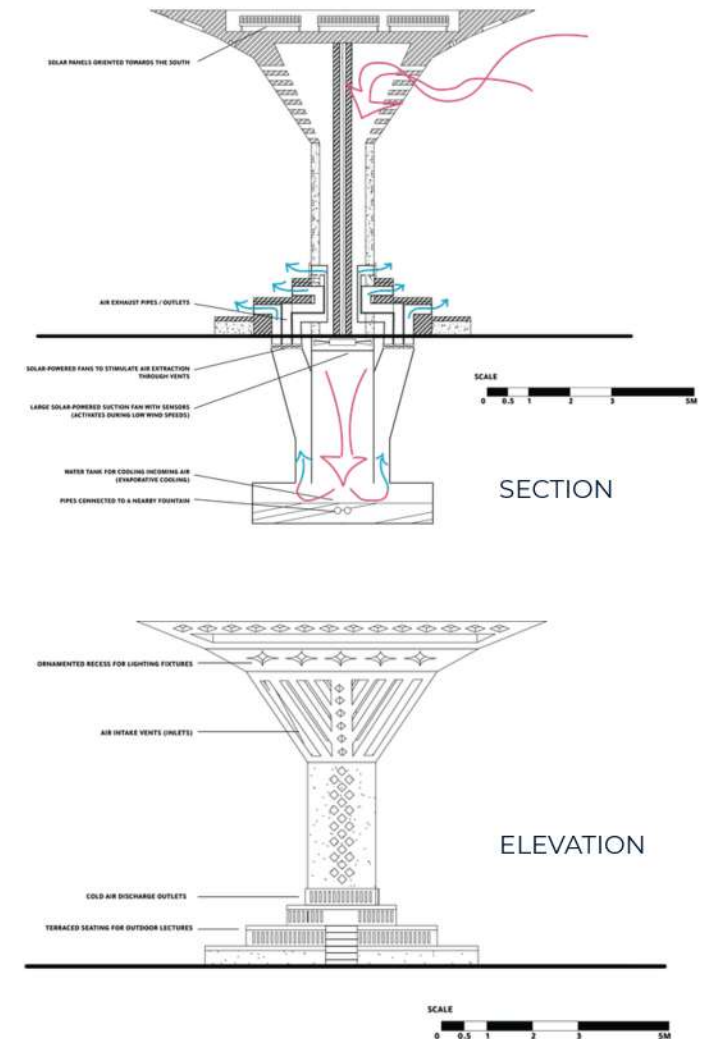
PROJECT:

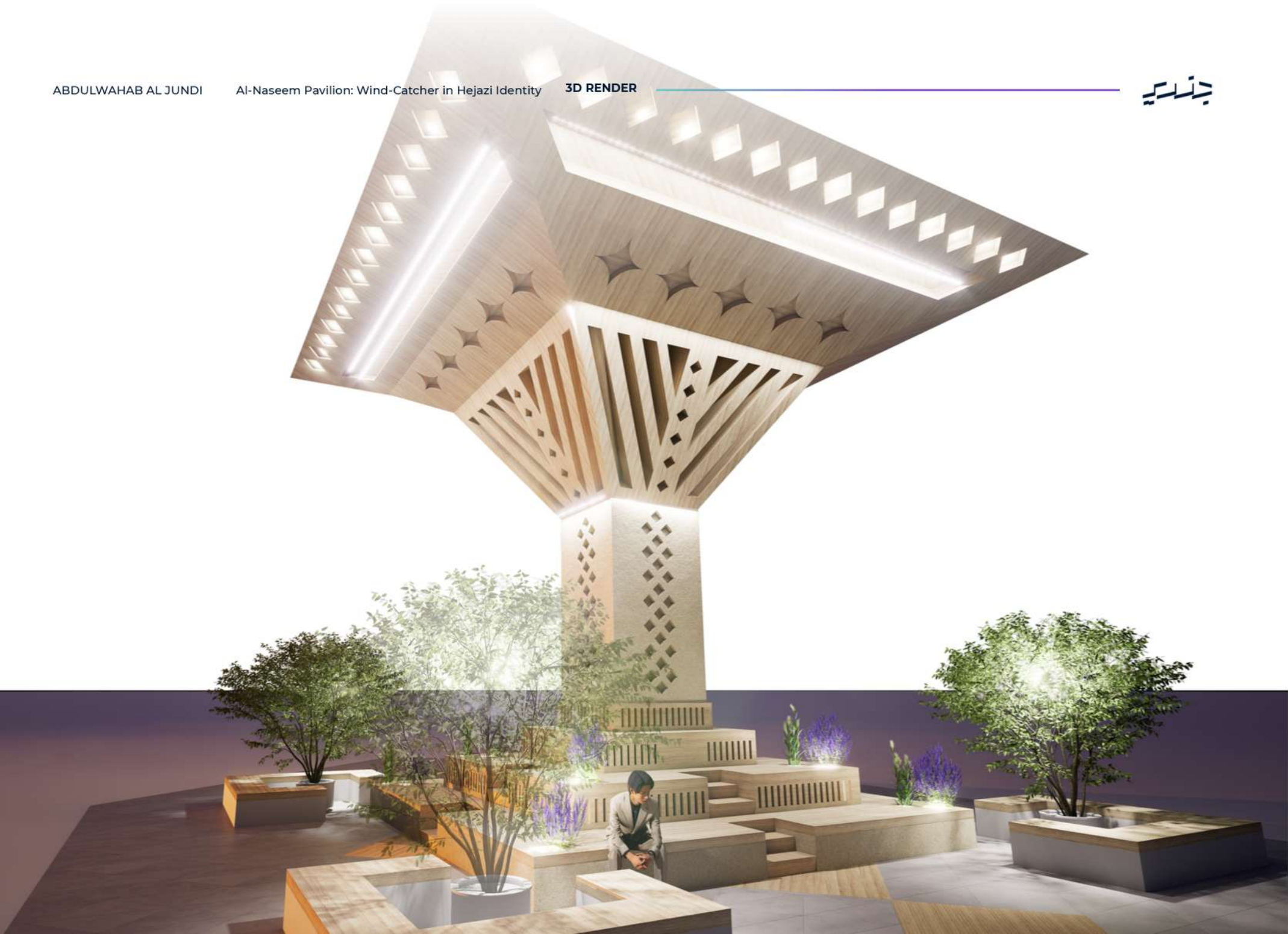
# Al-Naseem Pavilion: Wind-Catcher in Hejazi Identity

**The Concept** A sustainable urban intervention within the Al-Naseem Humanization Project. This pavilion merges Hejazi heritage with modern bioclimatic engineering to transform a transit corridor into a livable social hub.

### Key Features

- **Human-Centric Design:** Reclaims urban spaces to improve quality of life and social interaction.
- **Cultural Identity:** Features patterns and motifs inspired by the Hejazi Architectural legacy.
- **Educational Purpose:** Strategically serves as an Outdoor Classroom for the adjacent schools.
- **Passive Innovation:** Utilizes Wind-Catching (Malqaf) and Geothermal cooling to create a comfortable microclimate for students and residents.







عبدالوهاب الجندي  
ABDULWAHAB AL JUNDI

[WWW.THEJUNDI.COM](http://WWW.THEJUNDI.COM)

[ABDULWAHAB@THEJUNDI.COM](mailto:ABDULWAHAB@THEJUNDI.COM)

050 218 2356

LINKEDIN : ABD AL-WAHAB AL-JUNDI

JEDDAH KSA